



Trailer for Telecommunications



# TRAILER 3,5T

# MOBILE GSM STATION

Challenges and sustainable solutions

UNIT - SPECIAL



# INTRODUCTION

In situations where the GSM network is overloaded due to a large number of connected users, as is the case at large concerts and similar events, the trailer → the mobile GSM station is brought in, boost the signal and solve the network overload problem!







# UniO2 trailer TYPE 1980

whose use value has become extremely important in the time we live in, where being "networked" has become the most important thing

The O2 category trailer, i.e. 3.5t gross weight, with two axles from the renowned manufacturer AL-KO and a telecommunications antenna is a special upgrade, with many fines that make it a fully functional and interesting product.



# MOBILE GSM STATION

This trailer with a telecommunication antenna serves to amplify the signal and solve the problem of overloading the GSM network due to a large number of connected users.

In addition to AL-KO axles, there is also a drawbar of the same brand, with a jockey wheel at front part of drawbar.

Tires: 195/50R14C

**AL-KO**







# CARE FOR DETAILS 100%



The superstructure is made of insulated composite sandwich panels.

the core of which is the high-quality insulating and structural material Corafoam, with laminate composite coverings, produced as needed: UV stable, acid-resistant, fire-resistant, etc...; the panels are integrally white on the outside; the panels are from our own production "Uniplast Serbia" Šabac.





# COMMUNICATION EQUIPMENT

Equipment accommodation details

## FLOOR

The floor is thermally insulated, with a floor surface made of aluminum ribbed sheet, with reinforcement in the form of wooden beams in the antenna installation area and with floor reinforcement in the front part in the front area for installation of aggregates.

## PARTITION PANEL

The partition panel divides the superstructure into two unequal parts (1/3 rear part + 2/3 front part), and of course it contains built-in reinforcements for fixing the REK cabinet for housing the communication equipment.

It has an opening for passing cables, lined with stainless steel and protected with brushes on the "doors" themselves, which close the opening, in order to reduce the flow of impurities.





# SMALL THINGS ACCORDING TO THE WISHES AND MEASUREMENTS OF THE USER

For full functionality

## SIDE OF THE TRAILER

The side doors are only on the front part of the superstructure, in the form of mesh metal doors on both sides, with locks and the possibility of locking.

A tarpaulin with the possibility of manual rolling upwards is placed over the door as protection. It is possible to fix the tarpaulin both in the raised and in the closed position.

## REAR SIDE

On the rear part of the trailer there is a single-wing rear door and in that part of the upgrade there is a separate space for REK cabinets for communication equipment. In addition to the REK cabinet, there is also a manual cable reel because it is installed in that part.

Next to the rear single-wing door, there is also a folding ladder to access the superstructure roof.

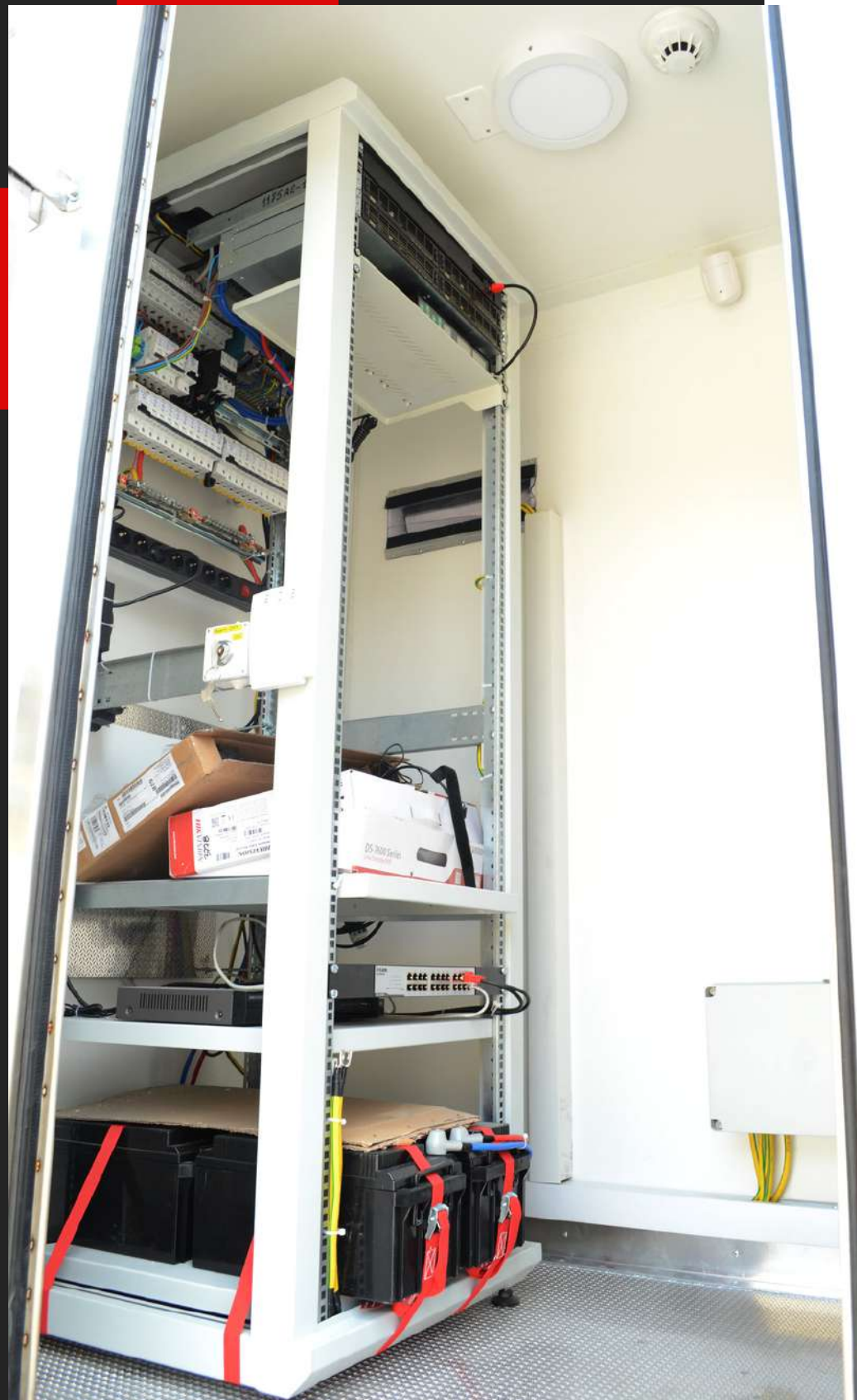




## AGGREGATE ON THE HEAD



## GRID METAL DOOR







# **TRAILER ROOF + ANTENNA POLE**

The roof has an aluminum running surface, adequate for working on it. Along the sides and the front, there is a protective fence that can be folded / lowered onto the roof panel.

An opening for the antenna is left in the central part of the roof, lined with stainless steel and protective rubber for fixing the antenna, and there is also the possibility of closing it with a "cover" when the opening is not in use.

A roof support was formed, i.e. tray for the last segment of the antenna, with the possibility of fixing it with spanners.

The preparation for the lightning rod was also done.

In order to allow the equipment to be fixed, in the area next to the sides and the forehead, there are also links for tying the load on the roof.

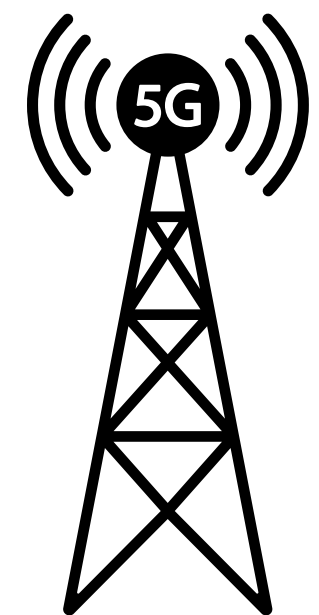




# FOLDING FENCE

Along the sides and the front, a **protective fence** is installed, which can be folded / lowered on the roof panel.

The trailer has hydraulic feet for leveling the superstructure placed in the corners (4 feet).





# FUTURE TREND

## Mobile Telecommunication Base Station

such telecommunications base stations mounted on a truck or trailer are designed to provide service in emergency situations when there is a sudden increase in demand for mobile network coverage due to major events, natural disasters or any other unforeseen circumstances, and are otherwise completely mobile.





# UNIT 02

This UniO2 trailer is only a part of the UNIT brand, where the wishes of the user are packaged in such a way as to comply with legal regulations, and at the same time provide the user with complete mobility and functionality for a purpose that is the trend of the future.

**THANK YOU FOR  
YOUR ATTENTION**

- +381 15 380 997
- office@uniplastserbia.com
- www.uniplastserbia.com

